

Warning: The interactivity in this PDF file is enabled by Javascript. For full functionality you have to use the Javascript capable PDF browser. Currently only Adobe Reader is available.

GRAPH OF A FUNCTION AND VALUES OF ITS DERIVATIVE

MATCHING GAME

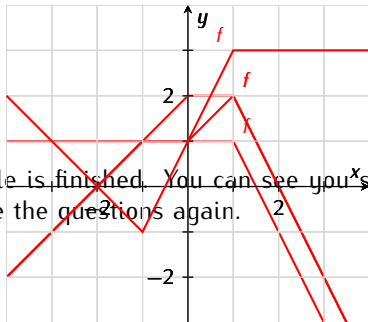
The goal of the puzzle is to make correct pairs of questions and answers with a minimal amount of incorrect attempts.

Wilhelm Leibniz, one of the authors of the integral calculus.

Match a graph of f with the correct statement about the derivative f' of the function f .

Graphs:

1/4



The puzzle is finished. You can see your score or browse the questions again.

Statements:

a

b

c

d

e

f

