



Warning: The interactivity in this PDF file is enabled by Javascript. For full functionality you have to use the Javascript capable PDF browser. Currently only Adobe Reader is available.

## FINDING FUNCTION DOMAIN FROM GRAPH

### MATCHING GAME

The goal of the puzzle is to make correct pairs of questions and answers with a minimal amount of incorrect attempts.



## Henri Poincare, French mathematician and polymath.

Use the given graphs to find domains of corresponding functions and match each function with its domain.

Graphs:

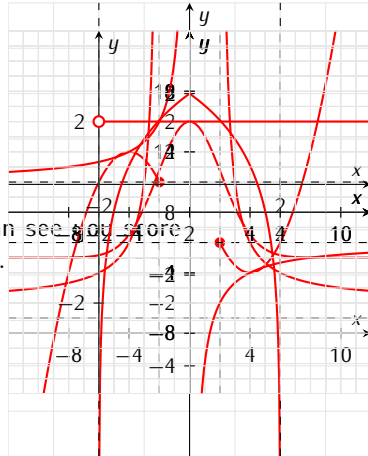
5/6

1/6



$$f(x) = \begin{cases} \log_2(x+2) & \text{if } x > -2 \\ 0.5(x-2) & \text{if } x \geq 2 \\ \log_2(x-2) & \text{if } x > 2 \end{cases}$$

The puzzle is finished. You can see it all here: [https://www.youtube.com/watch?v=...](#)



Domains:

a

c

e

b

d

f

